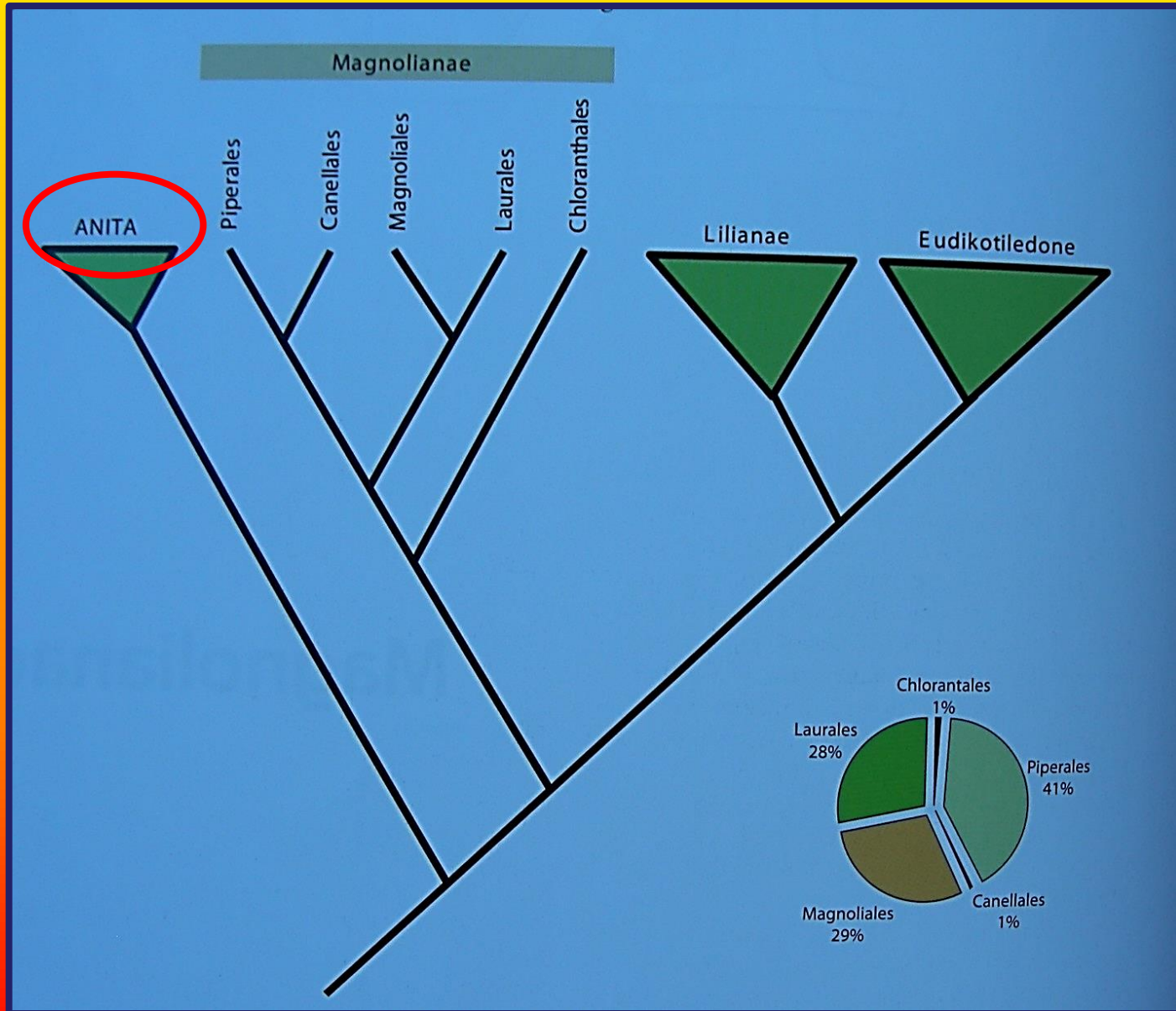


ANITA



ANITA

(Bazalne porodice)

Ženska jedinka



Muška jedinka



Amborella

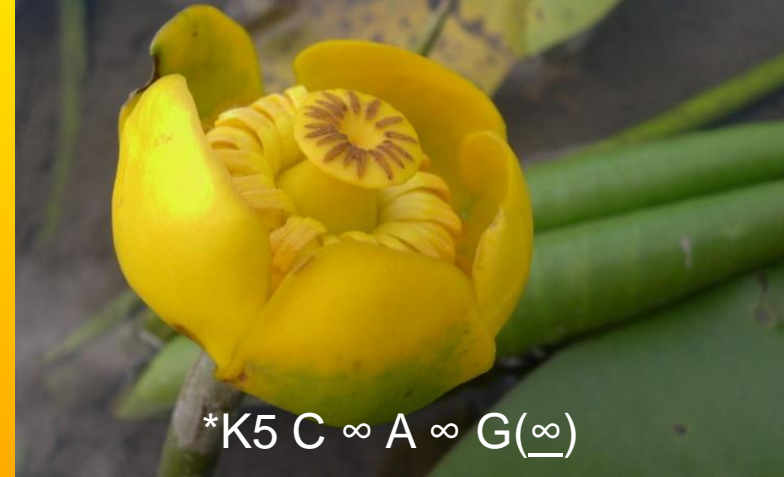


Austrobailleya

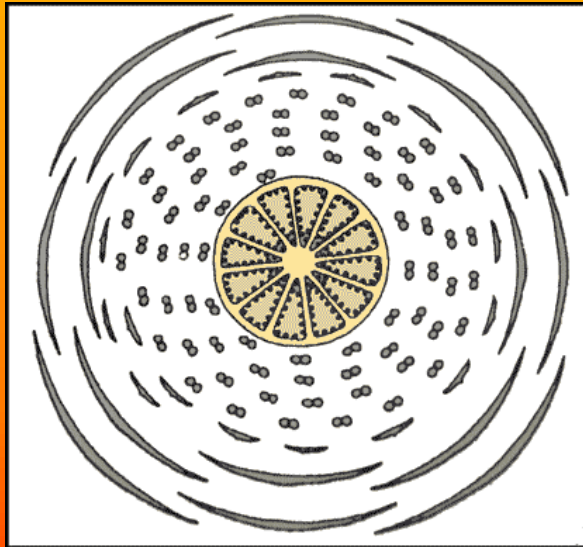


Red: Nymphaeales
fam. Nymphaeaceae
g. *Nymphaea* & *Nuphar*

Nuphar luteum- žuti lokvanj



*K5 C ∞ A ∞ G(∞)



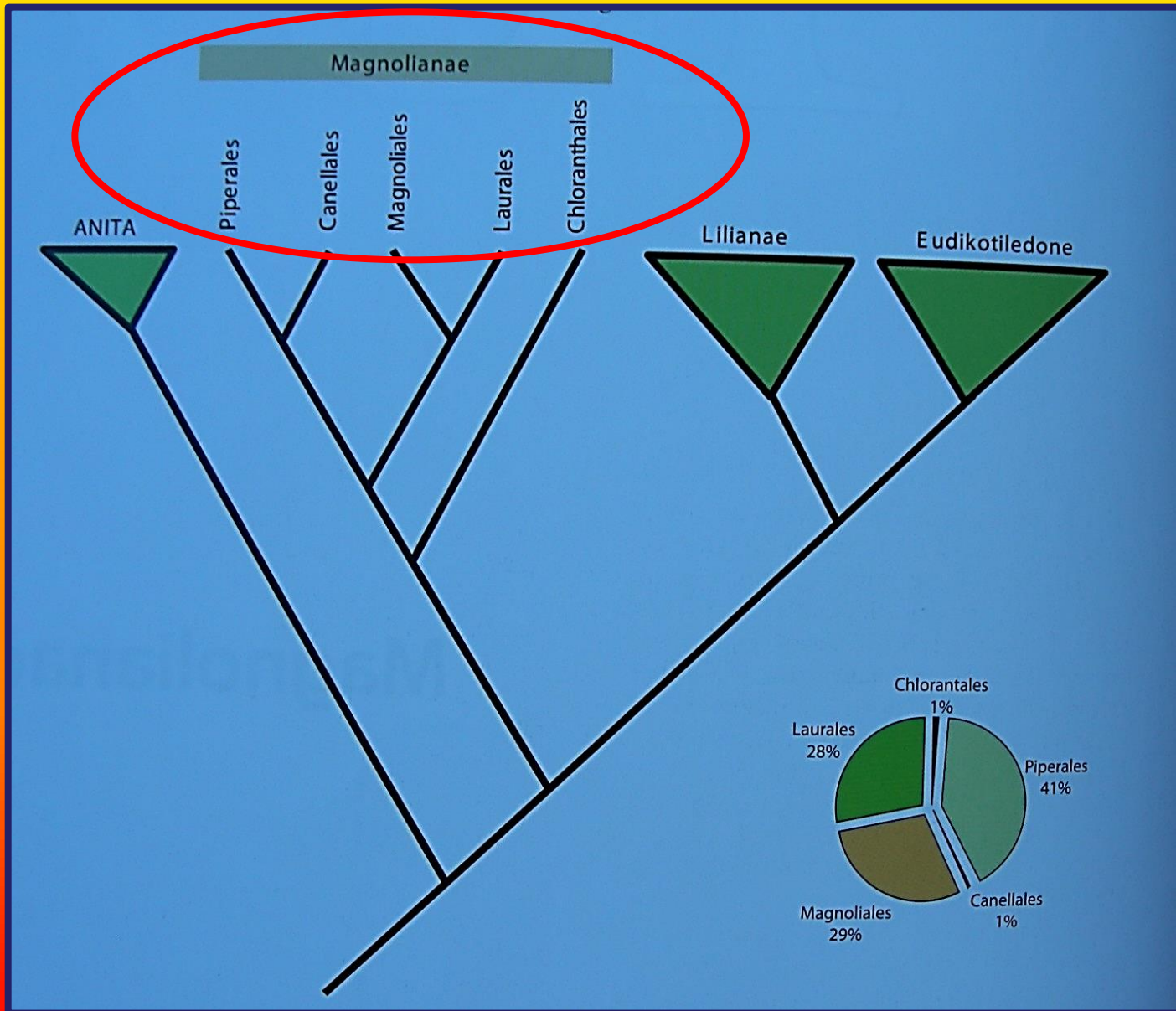
Nymphaea alba- bijeli lokvanj



*K2+2 C ∞ A ∞ G(∞)

Cvjetni dijagram fam. *Nymphaeaceae*

MAGNOLIANAE



Subordinaciona klasifikacija

- **Piperales** (**Aristolochiaceae**, Piperaceae)
- Canellales (Canellaceae)
- Magnoliales (Magnoliaceae, Myristicaceae)
- **Laureales** (**Laureaceae**)
- Chloranthales (Chloranthaceae)

Crvenom bojom su označeni taksoni zastupljeni u našoj nativnoj flori.

Red: Piperales



fam. Aristolochiaceae
g. *Aristolochia* & *Asarum*



Aristolochia rotunda

↑P(6) (A(6) G/(6))

gimnostemium



Aristolochia clematitis



Asarum europaeum (kopitnjak)

*P(3) A6+6 G/(6)

Aristolochia = vučja jabuka

Red: Piperales

Fam: Piperaceae

g. *Piper*



Piper nigrum- biber

P0 A3+3 G(3)

P0 A2 G(3)



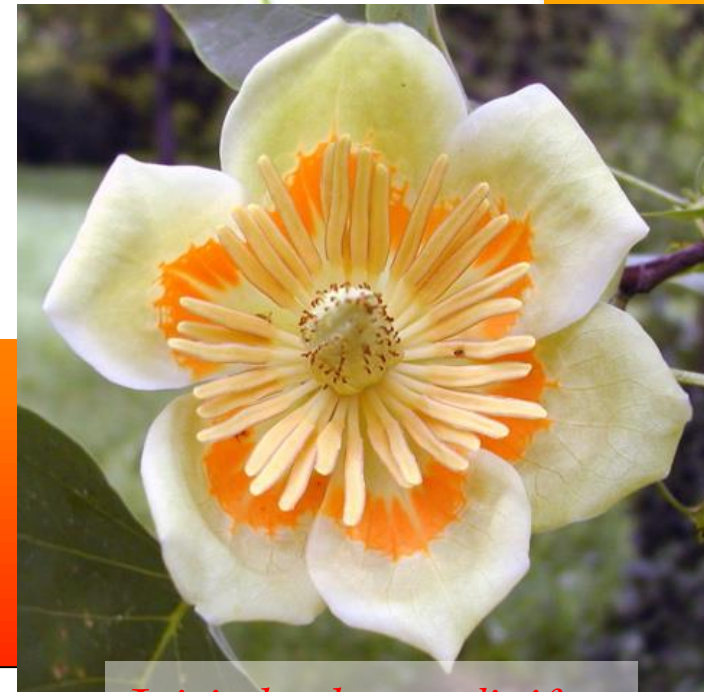
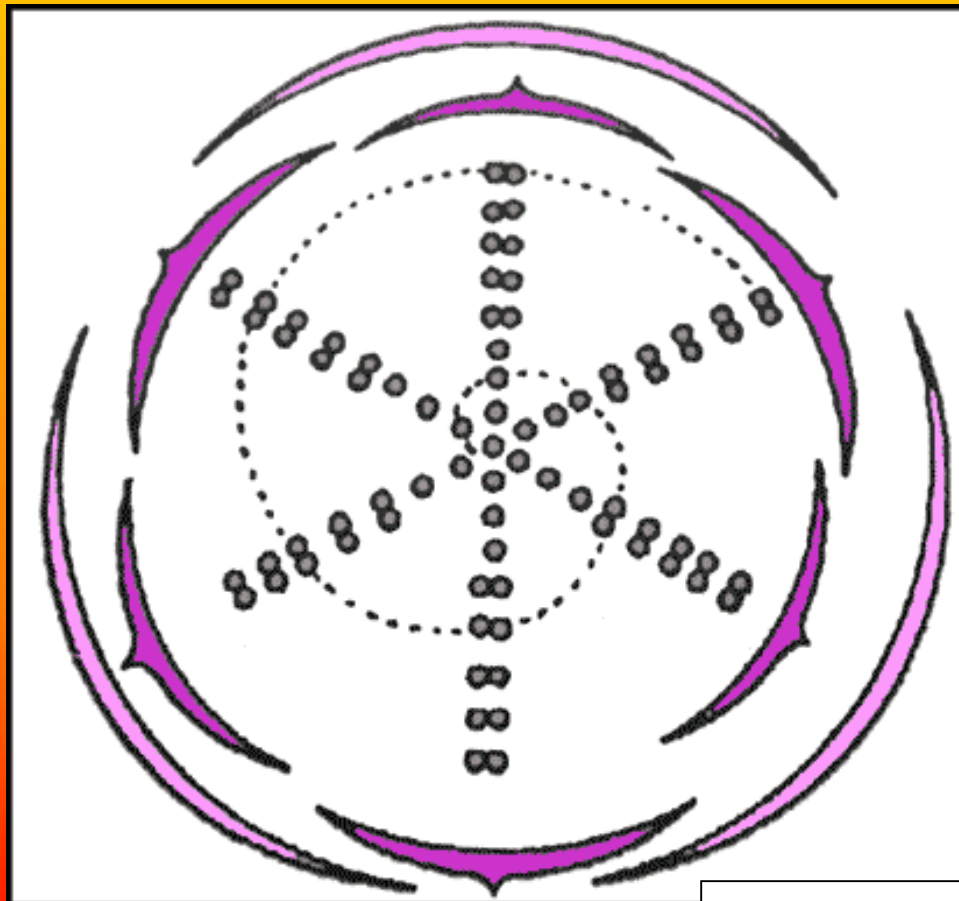
Jednosjemena
koštunica!

Red: Magnoliales

fam. Magnoliaceae

g. Magnolia

g. Liriodendron



*C3 K3+3 A ∞ G ∞

Liriodendron tulipifera



Magnolia grandiflora

*P3+3+3 A∞G∞



Magnolia liliflora

Fam: Myristicaceae
Myristica fragrans



*P(3) A(8-12)

*P(3) G 1

Red: Laureales

Laurus nobilis-
lovor (dvodom!)



- Fam: Laureaceae
- g. *Laurus* & *Cinnamomum*



***P4 A12**

Cinnamomum zeylanicum- cimet
Jednodoma biljka, sa dvopolnim cvjetovima

***P4 A2-4st G(3)**